

The perfect combination

UBIPACK  
GYN



SOPRO  
COMEG

# UBIPAC

## UBICAM

digital diagnosis set

### USB2 camera for diagnosis aid



USB cable

2 programmable buttons

- White Balance
- Freeze frames
- Anti moire

C-mount coupler

Focus ring

Scope holder

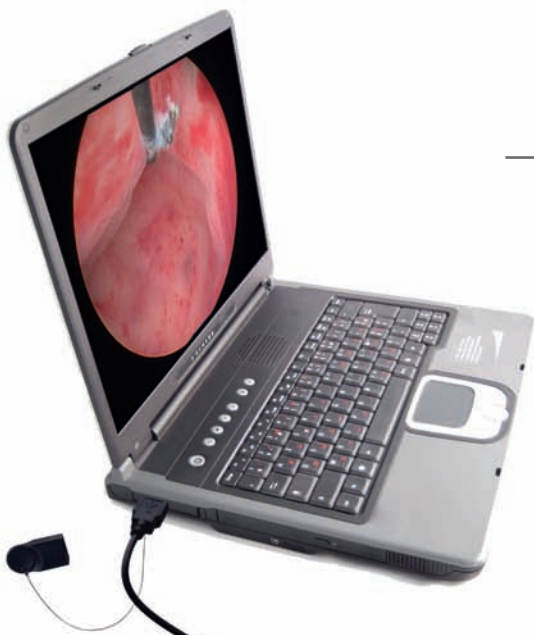


#### Smart and user-friendly

- "Plug and Diag.": so easy to use !
- All in one USB camera to connect directly to your PC

#### Cutting-edge technology

- Anti moire filter for flexible applications
- Automatic video settings during the white balance
- Waterproof



\*Power consumption between UBICAM and a standard 1 CCD camera

	S181 USB2 CAMERA - UBICAM	1 CCD CAMERA	USB / STD
STAND-BY MODE	0.45 W	8.93 W	19
ON	1.25 W	24.44 W	19

# K GYN

## sopro imaging Medical



### Imaging software dedicated to diagnosis aid and patient management

Already hugely popular for more than five years and available in more than 25 languages, **sopro imaging Medical** readability has been significantly improved with a sleek new design and enhanced ergonomics.

Whatever your requirements, **sopro imaging Medical** is the solution for streamlining your daily practice.

#### Many tools accessible with just one click

- Still frames or movies captures
- Medical reports
- Patient management
- Zoom
- Drawing and text editing
- Export your images and videos



#### Virtual Camera Control Unit

To simplify daily use, adjustments of the key settings have been optimized but remain at hand thanks to our unique concept of Virtual Camera Control Unit:

- Automatic White Balance
- Video parameters
- Flexible or rigid applications
- Shortcuts





**Powerful, ultra efficient and compact**

### LED consulting room light source

- LED technology for extended product life and reduced emitted heat
  - Bright illumination under all conditions
  - Uniform illumination with minimal shading
  - Color temperature close to daylight for the best color contrast
  - LED technology emits no ultraviolet (UV) rays or infrared (IR) radiation
- Output comparable to Xenon 100W lamp without the heat or high energy costs
  - Uniform light levels over the entire LED lifespan
- Compact and easy to use
  - Operates with a single touch



\*Power consumption between the LED and the Xenon light source

	S281 LED LIGHT SOURCE	XENON LIGHT SOURCE	XENON / LED
STAND-BY MODE	3.76 W	61 W	16
ON	41.36 W	150 W	3.6

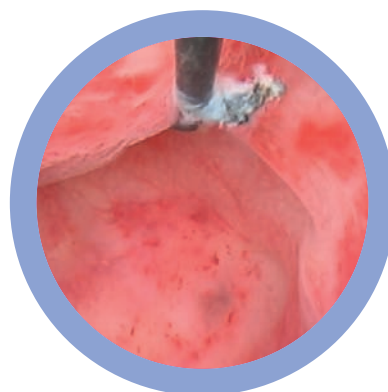
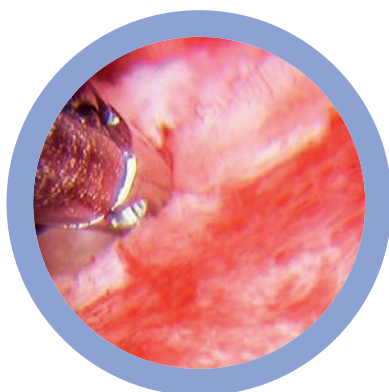
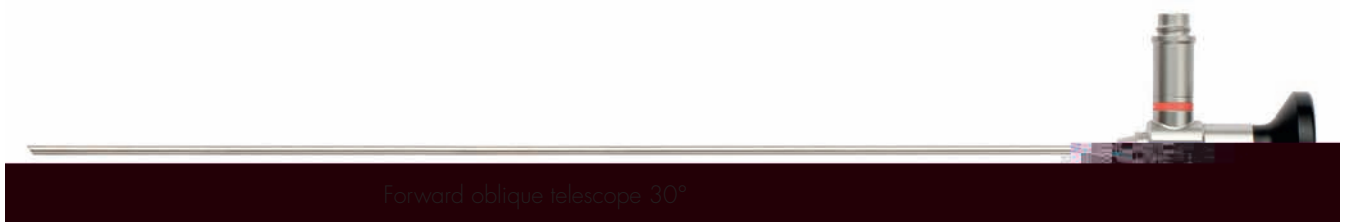
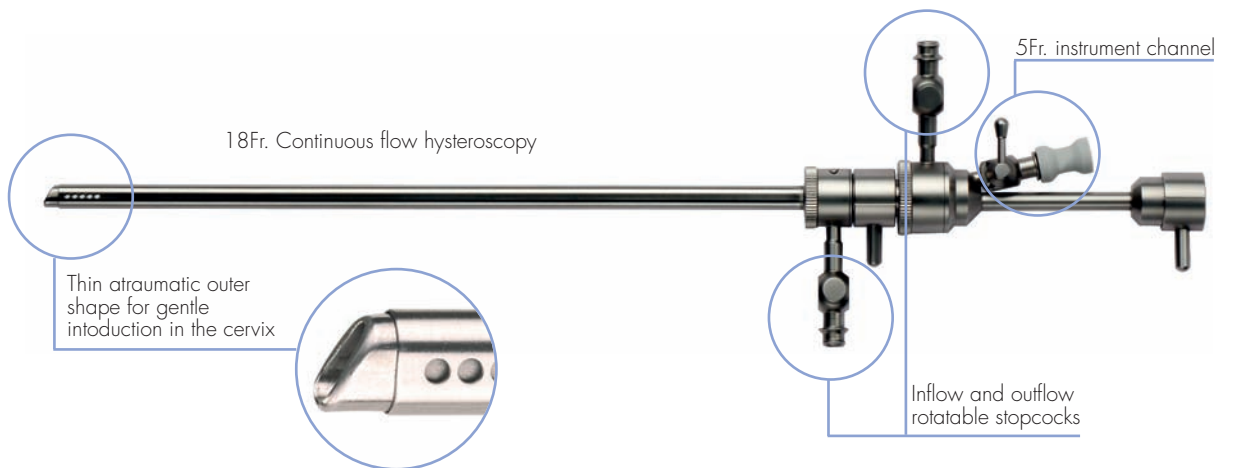
## Office Hysteroscopy

Manufactured with the latest technology know-how, the Sopro-Comeg optics offer you the best vision for endoscopic procedures.

Our multi coated rod lenses optical system improves brightness and contrast and the high quality light fibers make a perfect illumination of your field of view.

The reliability of our optics is tested up to 500 autoclave cycles and is improved with distal and proximal sapphire window, as well with our laser welding technology.

Specially designed for office hysteroscopy, this 18Fr. continuous flow sheath with rotatable stopcocks allows all hysteroscopic procedures such as : diagnosis, biopsy, hysteroscopy, sterilization method Essure™, ...



# UBIPACK


GYN

Includes the following devices:



- Sensor: CCD 1/4" high sensitivity
- Resolution: (752 x 582) PAL – (768 x 494) NTSC
- Definition: 470 lines
- Sensitivity: 2 lux
- Signal/Noise Ratio: 52 dB
- Automatic electronic shutter (1/50 to 1/100 000)
- Adjustable shutter area
- Automatic white balance
- Video enhancement
- Electronic anti-moire filter for flexible fiberoscope
- Modification of the video parameters
- Automatic detection of the color temperature according to the used light source
- Automatic saving of the adjustments parameters
- 2 programmable buttons
- Cable length : 3 meters, Ø:5 mm
- 1 USB 2.0 output
- Radel waterproof camera head
- C-Mount made of aluminium
- Size of the sensor : L = 87mm; Ø = 30 mm
- Weight of the sensor : 210g
- Power supply : 5 V DC
- Power consumption : 2.5 VA
- Delivered with 1CD ROM including:
  - The driver of the camera
  - The virtual control unit software
  - The user manuals
- Electrical protection: Class1, BF type
- Comply with the European standard 93/42/EEC - Class I
- Comply with the international standards IEC 60601-1; IEC 60601-2-18 ; IEC 60417 and EN 980

## Hysteroscopy set:

- 18Fr. Continuous flow hysteroscopy sheath, ref 191 273 202 for 2,7 mm forward oblique telescope 30° 200 mm working length
- Forward oblique telescope 30°, ref 163 282 992 Ø : 2.7mm ; length : 301mm with rod lenses optical system autoclavable with fiber optic light transmission incorporated color code: 



- LED technology
- Nominal power: 30 W (light intensity of a 100W xenon light source)
- Color temperature: > 4500° K
- LED lifetime: 50.000 hours (in advised conditions of use)
- Light cable input: Storz only
- Stand-by mode with light intensity memory
- Electronical iris
- Antiblooming system with light cable detection
- Automatic over temperature protection
- Adjustment of the light intensity: Manual
- Dimensions: D: 180mm; W: 95mm; H: 35mm
- Weight: 320 g
- Power consumption: 30 VA
- Input voltage of the supplied transformer: 115V or 230 V~ / 50 or 60 Hz
- Transformer: 12V DC
- Black LED light cable with Storz/Storz connector included L: 2.5m, diam : 4.8 mm
- Continuous service
- Electrical protection: Class1, CF type
- Comply with the European standard 93/42/EEC - Class I
- Comply with the international standards IEC 60601-1; IEC 60601-2-18 ; IEC 60417 and EN 980



## Recommended computer Configuration

- Operating system : Windows 7
- Processor Intel Core2
- RAM : 2 Gb
- Hard disk : 1 Tb
- USB ports : 4 USB 2.0 Hi-Speed ports
- Graphics Card with NVIDIA or ATI chipset /512 MB of unshared video RAM with support for DirectX 9 or higher
- USB chipset : Intel or NEC
- Screen Resolution : 1280 x 1024 or higher
- The Computer must comply with IEC60950 or IEC 60601-1

