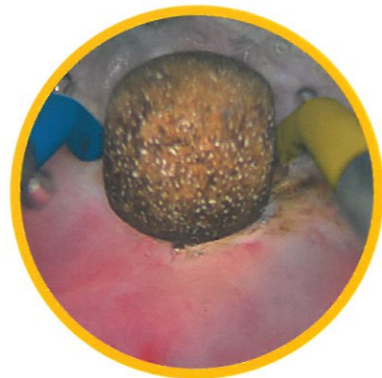
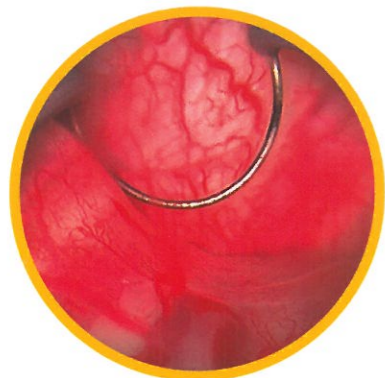
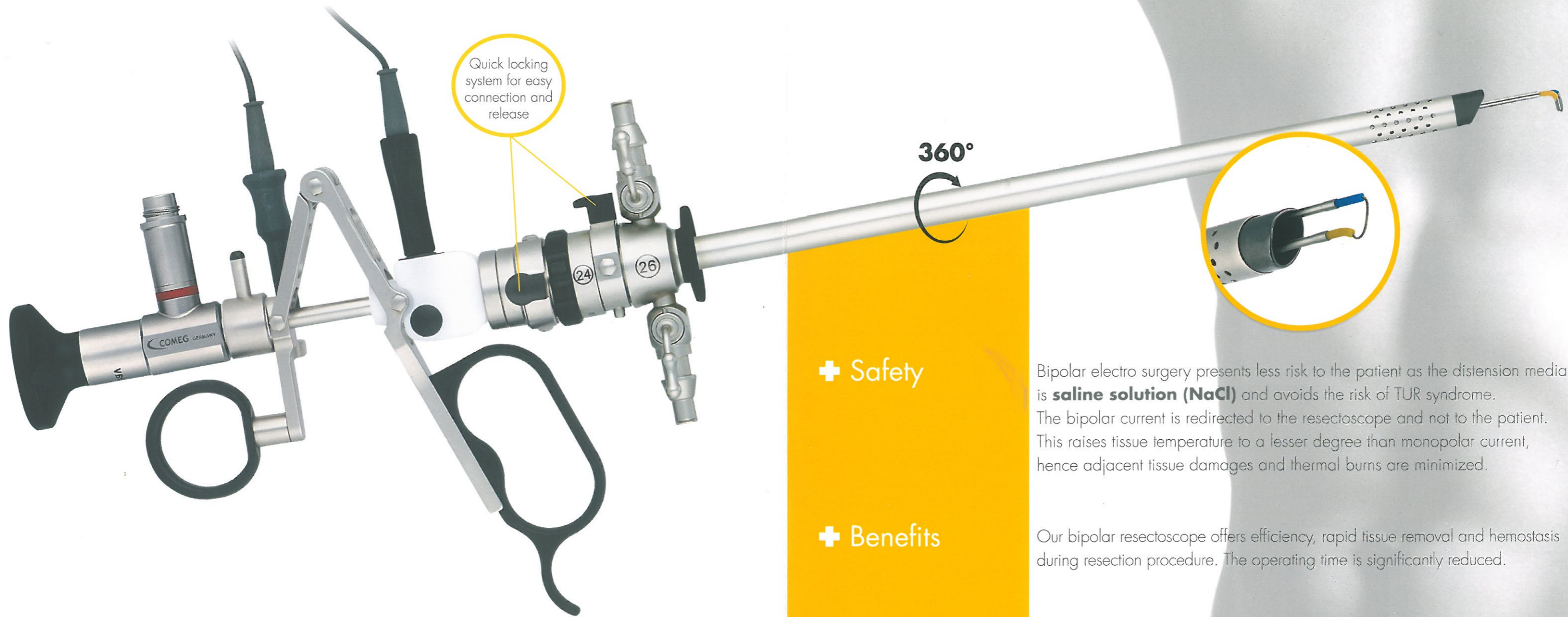


TUR Bipolar solution



Resection of the prostate and controlled coagulation

+ Safety

Bipolar electro surgery presents less risk to the patient as the distension media is **saline solution (NaCl)** and avoids the risk of TUR syndrome. The bipolar current is redirected to the resectoscope and not to the patient. This raises tissue temperature to a lesser degree than monopolar current, hence adjacent tissue damages and thermal burns are minimized.

+ Benefits

Our bipolar resectoscope offers efficiency, rapid tissue removal and hemostasis during resection procedure. The operating time is significantly reduced.

+ Ease of use

Thanks to the SOPRO-COMEG **quick lock system**, you will easily assemble all parts of your bipolar resectoscope to perform the resection. A choice of passive or active working elements and a large range of reusable electrodes allow you to keep your habits.

+ Compatibility

SOPRO-COMEG bipolar resectoscope can be used with most of electro surgery units having bipolar resection mode.

+ Cost effective

The compatibility of SOPRO-COMEG **reusable electrodes** with your existing electro surgery unit offers cost saving solutions.

SYSTEM CHART

Telescopes

Art. N°165 403 001:

- Telescope 4mm
- 12°
- Autoclavable



Art. N°165 403 002:

- Telescope 4mm
- 30°
- Autoclavable

Working elements

Art. N°395 015 001:

- Passive



Art. N°395 015 002:

- Active



Continuous flow sheath and obturator

Art. N°395 015 027:

- Continuous flow sheath
- 26 Fr. / 24 Fr.
- Quick lock



Art. N°395 015 019:

- Obturator
- Quick lock



Electrodes

Art. N°395 400 026:

- Cutting loop electrode
- Wire Ø 0.35mm
- 24 Fr. NaCl
- Reusable



Art. N°395 400 027:

- Coagulation electrode
- "Collins" type
- 24 Fr. NaCl
- Reusable



Art. N°395 400 028:

- Coagulation electrode
- Ball shape 3 mm
- 24 Fr. NaCl
- Reusable



Art. N°395 400 029:

- Coagulation electrode
- Ball shape 5 mm
- 24 Fr. NaCl
- Reusable



Art. N°395 400 031:

- Coagulation electrode
- Roller
- 24 Fr. NaCl
- Reusable



**For more information,
see our Urology catalog**

French production plant:
SOPRO-COMEG
ZAC Athélia IV
Avenue des Génévriers
13705 La Ciotat cedex - France
Tel. +33 (0) 442 98 01 01
Fax +33 (0) 442 71 76 90

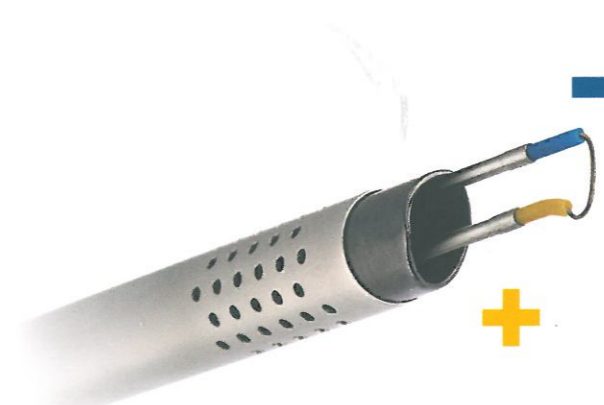


info@sopro-comeg.com - www.sopro-comeg.com

German production plant:
SOPRO-COMEG
Dornierstr.55
D-78532 Tuttlingen
Germany
Tel: +49 (0) 7461-9344-0
Fax: +49 (0) 7461-9344-20



TUR Bipolar solution



Non contractual document - 011585A - 10/2013 - Copyright©2013 SOPRO-COMEG. All rights reserved. No information or part of this document may be reproduced or transmitted in any form without the prior permission of SOPRO-COMEG.