

The 5000 Series All-In-One Video Processor

Ultimate Versatility for Your Practice



Plug and Play Simplicity. *Patient Care, Simplified.*

VISION[®]
sciences

Vision Sciences[®] ENT Endoscopy
Redefining Otolaryngology



VISION[®]
sciences
REDEFINING ENDOSCOPY

40 Ramland Road South / Orangeburg, NY 10962
Telephones: 800-874-9975 / 845-365-0600 / Fax: 845-365-0620
E-Mail: info@visionsciences.com

CE 0843

www.visionsciences.com



© 2010 Vision-Sciences, Inc. Vision Sciences, EndoSheath, and Slide-On are registered trademarks of Vision-Sciences, Inc. Covered by one or more of the following U.S. Patents: 5,025,778; 5,193,525; 5,271,381; 5,329,887; 5,337,734; 5,443,781; 5,447,148; 5,483,951; 5,518,501; 5,520,607; 5,626,553; 5,667,476; 5,685,822; 5,827,177; 5,876,329; 6,174,280; 6,190,330; 6,350,231; 6,461,294; 6,530,881; 6,579,582; 6,733,440; 6,740,030; 6,793,661; 7,025,923; 7,056,284; 7,081,097. Other U.S. and international patents pending.

PL 12645 Rev A 03/2010

ENT Endoscopy

Fiberoptic Laryngoscopy

ENT-4000

High Performance Fiberoptic Endoscopy

The ENT-4000 Portable Flexible Laryngoscope from Vision-Sciences combines state-of-the-art image quality with the convenience of a battery powered light source. The ENT-4000 features a distal tip diameter of 3mm, an overall working length of 300mm, and exceptional angulation of 140 degrees in both directions, all of which allow for complete access to the pharyngeal and laryngeal anatomy. Compatible with both the BLS-1000 Battery Powered LED Light Source and conventional fiberoptic light sources, the ENT-4000 is designed to add versatility and flexibility to any ENT practice. The ENT-4000 is fully compatible with the sterile, disposable EndoSheath® Technology.

ENT-4000 LARYNGOSCOPE TECHNICAL SPECIFICATIONS

Working Length:	300mm (Nominal)
Angulation:	140° Up & Down
Field of View:	90°
Depth of Field:	3mm-50mm
Distal Tip Diameter:	3mm (Nominal)

ENT-4500

Small Diameter, High Quality Imaging

The ENT-4500 Small Diameter Flexible Laryngoscope* from Vision-Sciences combines state-of-the-art image quality and a small diameter insertion tube to provide superb visualization of the nasal, pharyngeal and laryngeal anatomy. The slim outer diameter of 2.4mm allows access to small and deformed nasal passages and intubation tubes while still providing patient comfort.

ENT-4500 LARYNGOSCOPE TECHNICAL SPECIFICATIONS

Working Length:	300mm (Nominal)
Angulation:	140° Up & Down
Field of View:	80°
Depth of Field:	3mm-50mm
Distal Tip Diameter:	2.4mm (Nominal)

BLS-1000 LED Light Source

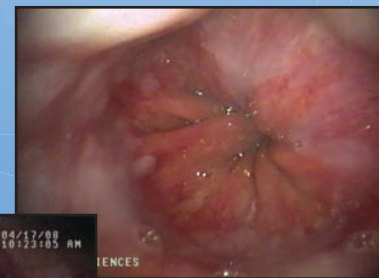
The third generation BLS-1000 offers optimal portability for endoscopic viewing. The LED based illumination provides one of the brightest, portable light sources for endoscopic viewing on the market today. It integrates seamlessly with the entire line of 4000 series endoscopes.



ENT-4000 Laryngoscope



ENT-5000 Laryngoscope with full screen presentation



TNE-5000 Esophagoscope

Video Laryngoscopy

ENT-5000

High Performance Video Endoscopy

The ENT-5000 is an ideal digital laryngoscopy system that is ultra portable, versatile, and offers high performance imaging. The compact size of the overall system makes it perfect for bedside procedures and any size practice or hospital. The ENT-5000 features CCD-based imaging allowing for high resolution picture quality with LED based illumination for vibrant colors. With a small diameter insertion tube, the ENT-5000 is designed for maximum patient comfort. The digital nature of the ENT-5000 provides one-touch image enhancement, image freeze, and image capturing. The ENT-5000 Laryngoscope is fully compatible with the sterile, disposable EndoSheath® Technology.

ENT-5000 LARYNGOSCOPE TECHNICAL SPECIFICATIONS

Working Length:	300mm (Nominal)
Angulation:	140° Up & Down
Field of View:	90°
Depth of Field:	3mm-50mm
Distal Tip Diameter:	3mm (Nominal)

TNE-5000

The Most Affordable, Practical TNE System

The TNE-5000 is an ideal Transnasal Esophagoscopy system. By utilizing EndoSheath® Technology, the TNE-5000 allows the practitioner to perform more procedures with less instrument downtime and provides a sterile insertion tube for every patient. The compact size of the overall system makes it perfect for office-based procedures in any size practice or hospital. The various channel sizes of the different disposable sheaths (TV-1.5 and TV-2.1) allow, for the first time, the freedom to 'customize' the esophagoscope to fit the procedure and to increase the patient's comfort.

TNE-5000 ESOPHAGOSCOPE TECHNICAL SPECIFICATIONS

Working Length:	650mm
Angulation:	145° Up & 220° Down
Field of View:	110°
Depth of Field:	3mm-50mm
TV-1.5 Insertion Tube OD:	4.7mm x 5.4mm (1.5mm Channel)
TV-2.1 Insertion Tube OD:	4.7mm x 5.8mm (2.1mm Channel)

STR-5000 Stroboscopy

The VisionSciences® STR-5000 Stroboscopy unit is designed to provide practical integration with the DPU-5000 Series Digital Processor, allowing physicians the ability to affordably integrate stroboscopy into their flexible video endoscopy system.



*Available in May 2010